

Voters' Attitudes and Opinions Towards Issues Facing Montgomery County Public Schools

January 2018



**SOUTHEAST
RESEARCH**

P.O. Box 241271

Montgomery, Alabama 36124

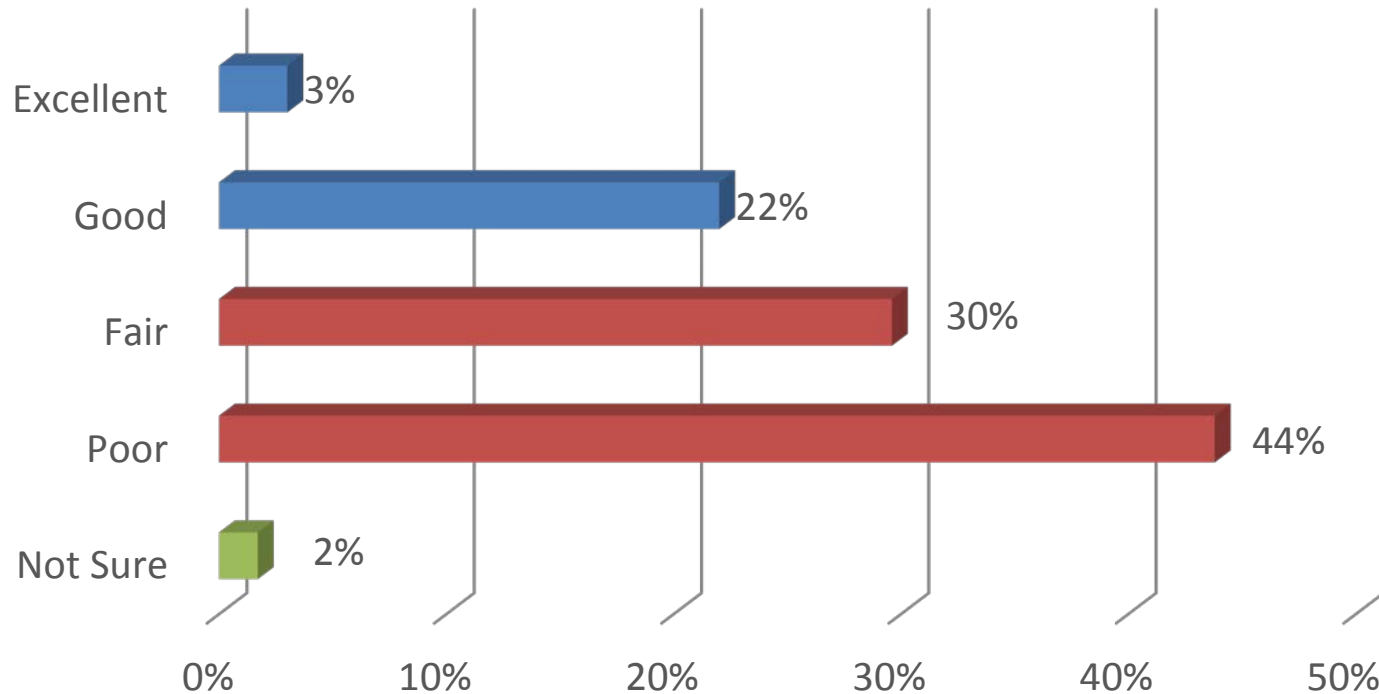
Voice: (334)260-9124 Fax: (334)260-0633

www.SoutheastResearch.com

Methodology

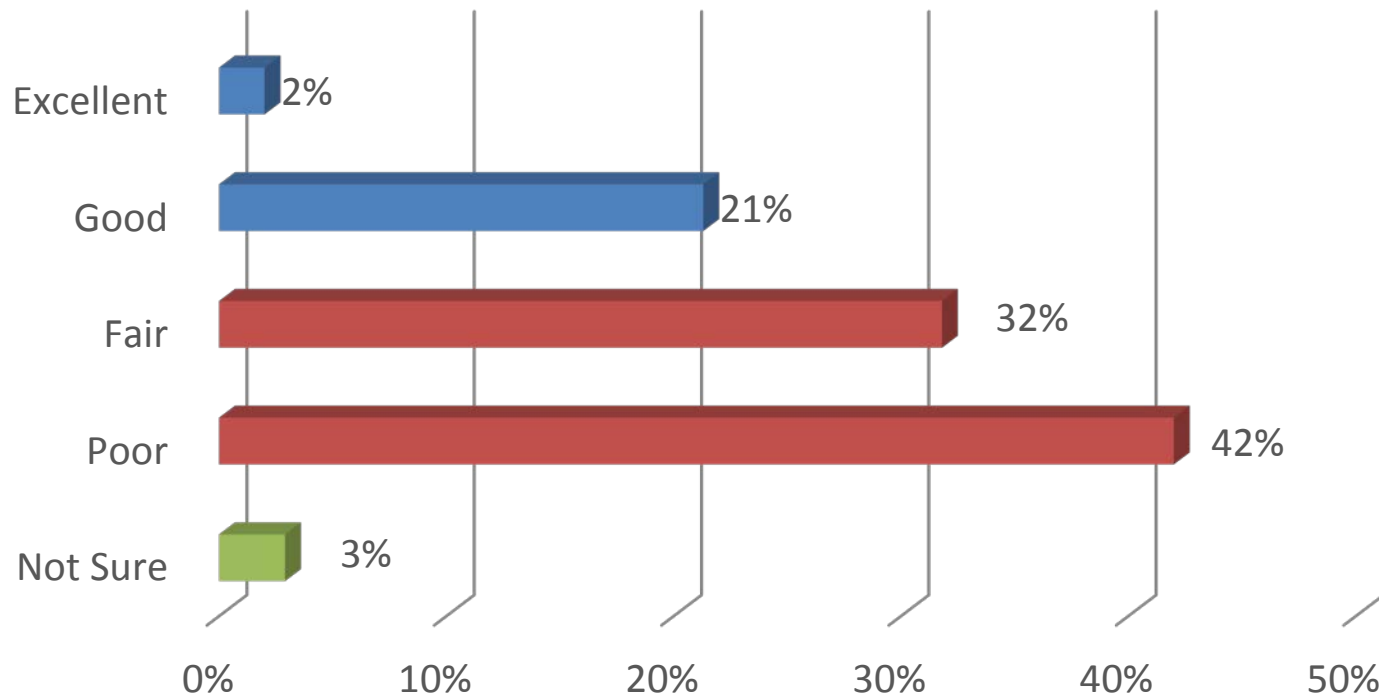
- A telephone survey was conducted January 10 – 14, 2018 with 500 registered voters in Montgomery County, Alabama. To increase coverage, the sample was supplemented with 100 cellphone interviews. All surveys were conducted with live telephone interviewers.
- The margin of error due to sampling is ± 4.5 percentage points at the 95 percent confidence level.
- Data have been weighted to reflect the age characteristics registered voters in the county.

Chart 1
Voters' Perception of Overall Quality of
Montgomery Public Schools



Seven out of ten voters rate the overall quality of Montgomery's Public Schools as either fair or poor.

Chart 2
Job Performance Rating of the
Montgomery Board of Education



Seven out of ten voters rate the job performance of the Montgomery Board of Education as either fair or poor.

Chart 3

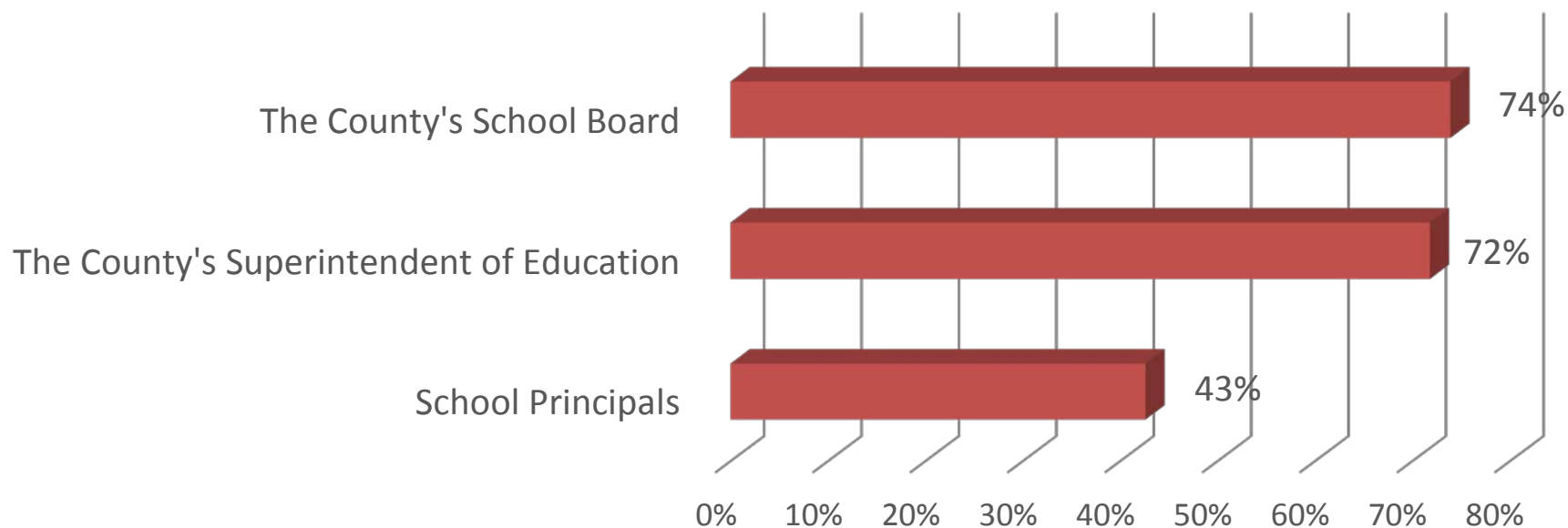
Reasons Voters Feel the State Decided to Intervene and Take Over Montgomery's Public School System

	Total
Schools failing/in crisis/not doing a good job	29%
Financial issues	16%
Test scores poor	13%
Discipline issues/violence/fighting	9%
School board not doing a good job	8%
Quality of education is poor	8%
Not enough qualified teachers/staff	7%
Poorly managed	6%
Low graduation rate	5%
Will help improve schools	4%
Children's needs not being met	3%
Uncaring leaders/staff	3%

NOTE: None of the respondents indicated that intervention and takeover of the Montgomery Public Schools was not needed.

Chart 4

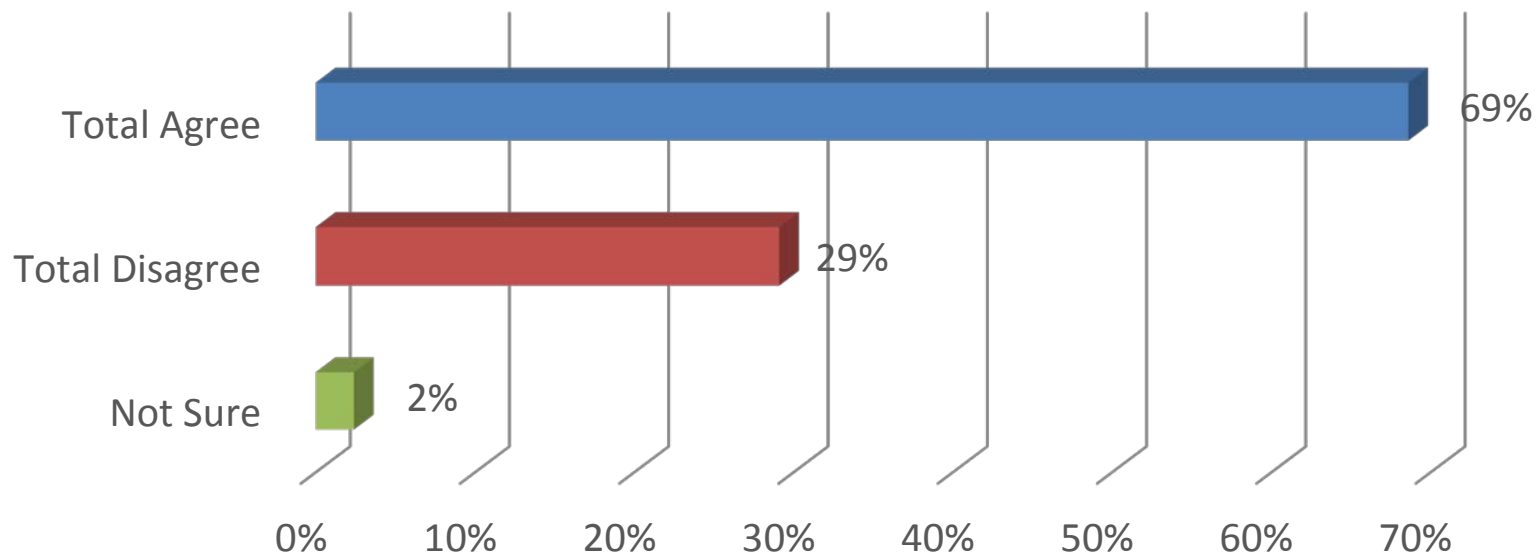
Who Do Voters Blame* for MPS's Financial Problems?



* Represents voters who placed either a great deal of blame or some blame on a particular entity.

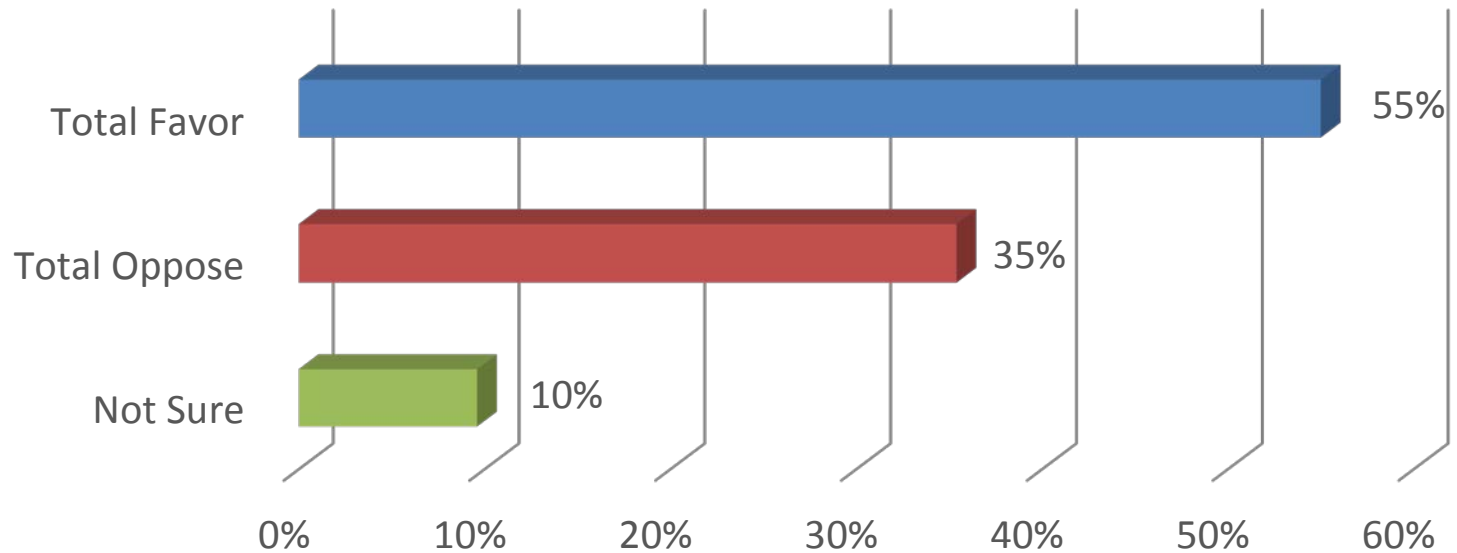
Chart 5

Proportion of Voters who Agree with Dr. Richardson's Statement that the Montgomery School Board is to Blame for the System's Financial Problems and Students' Low ACT Scores



Total Agree represents voters who strongly agree or somewhat agree. Total Disagree represents voters who strongly disagree or somewhat disagree.

Chart 6
Proportion of Voters who Favor Replacing
Montgomery School Board Members



Total Favor represents voters who strongly favor or just favor. Total Oppose represents voters who strongly oppose or just oppose.



Montgomery
Chamber

BUILD ON

Chamber Summary to Board of Directors January 25, 2018



BUILD ON



Montgomery
Chamber

BUILD ON

“If a school system is under intervention, it is the Board of Education’s fault...”

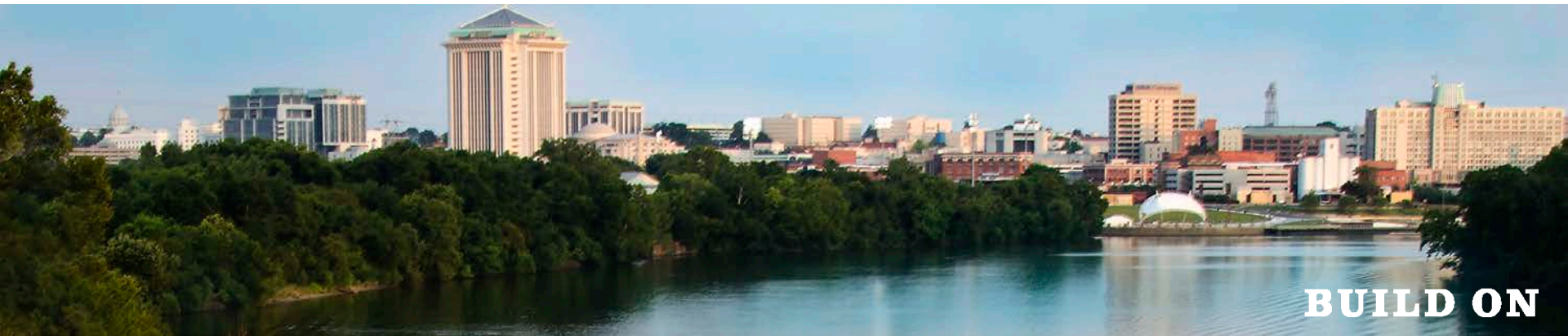
State Superintendent of Education Dr. Ed Richardson
*statement to members of the Montgomery County Board of Education
September 28, 2017*



BUILD ON

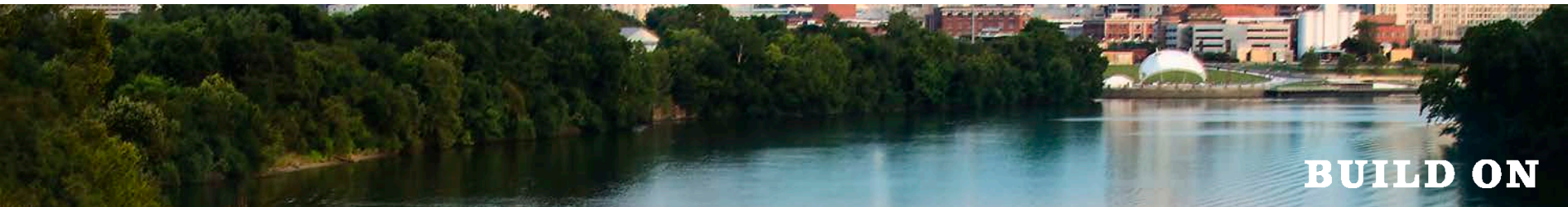
Perception of Overall Quality of MPS

- 7 of every 10 people agree that MPS:
 - Schools are failing
 - The system is in crisis
 - The issue is urgent



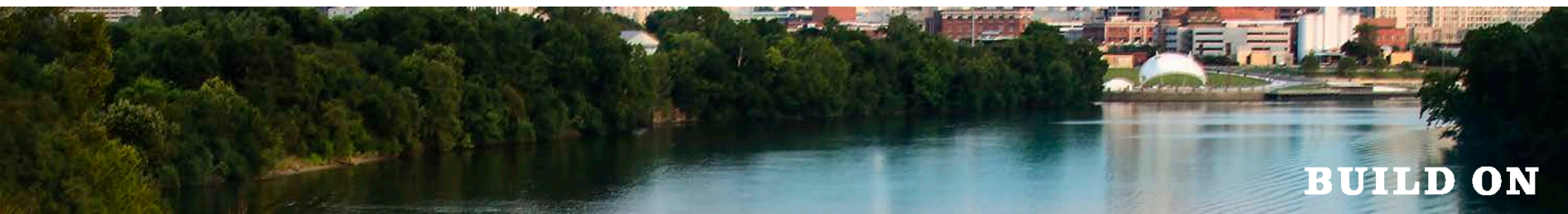
Reasons State Intervened/Took Over MPS

- **No one** indicated that state should **not** have intervened
- 90% stated:
 - *financial, academic, lack of leadership at top*



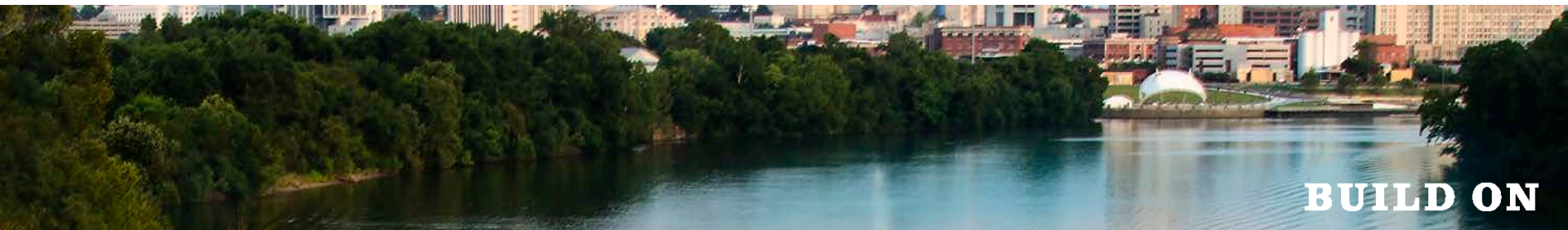
Majority of those polled agree with Dr. Richardson's assessment that the Board of Education is to blame for the System's Problems and Low ACT Scores.

- 14 - Average MPS ACT Score
- 21 - Average Alabama Public School student ACT Score



ASDE “failing schools list”

- Comprised of **bottom 6%** of all schools in AL according to student achievement scores on standardized exam.
- **11 of the state’s “worst schools” are in Montgomery, including all five non-magnet high schools.**
- **MPS had the second highest number of schools on the list, behind Bham at 14.**



Montgomery Failing Schools

- 1. Bellingrath Middle School**
- 2. Capitol Heights Middle School**
- 3. Carver Senior High School**
- 4. Davis Elementary School**
- 5. Fews Secondary Acceleration Academy**
- 6. Highland Avenue Elementary School**
- 7. Jefferson Davis High School**
- 8. Lanier Senior High School**
- 9. Lee High School**
- 10. Nixon Elementary School**
- 11. Park Crossing High School**

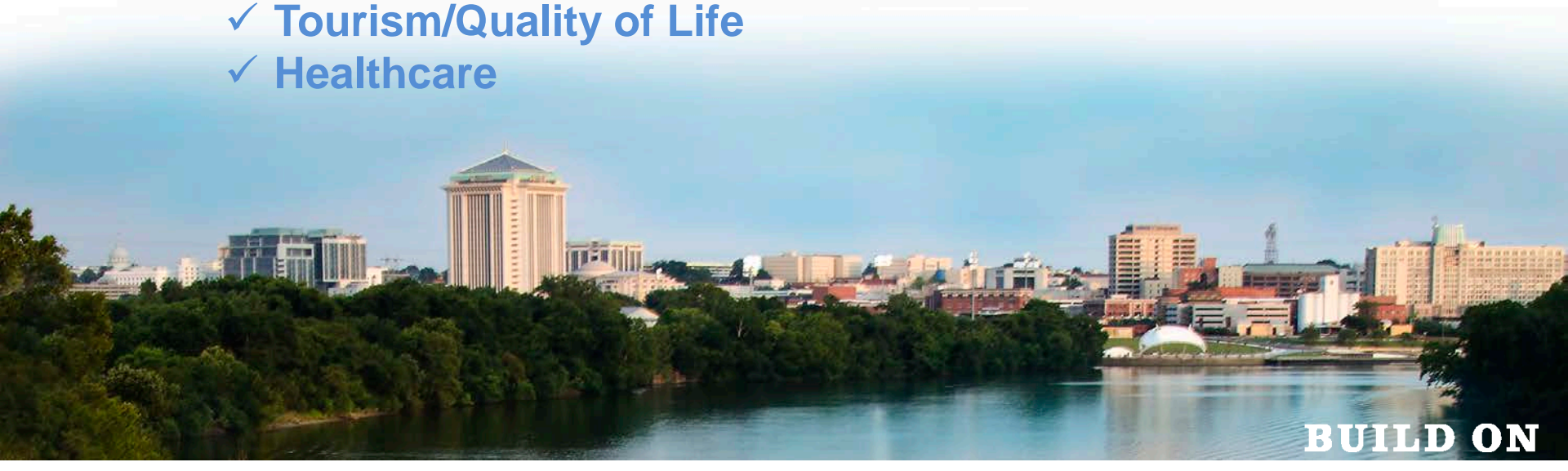


Montgomery
Chamber

BUILD ON

Public Education Impacts the Chamber's Mission to Create Jobs and Prosperity for our City and Region:

- ✓ Economic Development
- ✓ Talent Recruitment/Retention
- ✓ Military Preservation & Growth
- ✓ Workforce Development
- ✓ Tourism/Quality of Life
- ✓ Healthcare



BUILD ON



Montgomery
Chamber

BUILD ON

Conclusion

**We have a critical issue in MGM.
It is impacting the Future.
It starts with Leadership.
The time is Now.**



BUILD ON