

2020-2021 BACK TO SCHOOL GUIDE

EQUITY SCHOLARSHIP INNOVATION
ACCOUNTABILITY INTEGRITY ACHIEVEMENT
COLLEGE & CAREERS PARENTAL INVOLVEMENT
TECHNOLOGY COMPASSION



SAFETY *AMAZING POSSIBILITIES* SUPPORT
TEAMWORK RESPECT FOR OTHERS



MONTGOMERY
PUBLIC SCHOOLS

MOVING FORWARD TOGETHER



**MONTGOMERY
PUBLIC SCHOOLS**

Superintendent Ann Roy Moore

Welcome to the 2020-2021 school year! As a former teacher and principal, I'm always excited to kick off a new school year. And even though this school year will look different from years past, I'm still just as excited. For our families that are new to the district, we welcome you with open arms. To our returning families, welcome back and we look forward to moving forward together.

As we all know, COVID-19 has changed our normal approach to learning. Instead of smiling teachers welcoming students back into classrooms, we're starting this year off completely virtual. This means all of our students will receive their instruction virtually using our online platform Schoology. All students, teachers, and parents will have the opportunity to engage in Schoology training to ensure everyone is comfortable with the system. Also, the district will provide the same services it typically provides during a normal school year. For example, there will not be any interruptions with social services, student support, or our meals program. We're coordinating all of our services through each school, so parents will know how to access the services.

As a superintendent, it's always my expectation that we will achieve academic excellence and grow from previous years. I'm proud of the growth we've experienced so far, and we are dedicated to continue moving in the right direction. We are providing continuous professional development for our educators and adopting new strategies to support our virtual classrooms. We are also providing parents and students with training videos and other support materials to make sure everyone stays in the know.

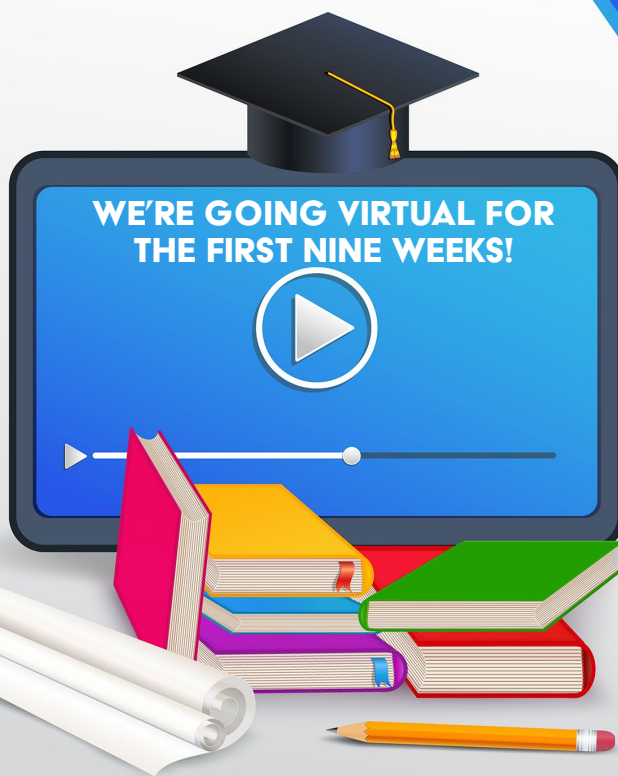
The district recognizes that adjusting to a new way of learning may be difficult for some of our students. Our teachers are prepared to recognize these signs early on so that we can help guide them. Parents, we're asking that you monitor your students' well-being too. Please communicate with our staff if you sense your child is experiencing any difficulties as we embrace our new learning environments. In addition, parents, please remember to take care of yourself. Our new ways of learning will affect us all.

Again, welcome back to school. I'm looking forward to seeing everyone in action! I'm aware there will be challenges as we journey through this new normal, but together we'll do what's best for our students.

Sincerely,

Ann Roy Moore





While students will begin the school year online, MPS plans to offer face-to-face learning as early as the second nine weeks. Starting on page 8 of this guide, you can find information on safety measures and other issues related to students returning to school campuses. Stay up-to-date on changes by visiting the following:

District Website:
www.EngageEducateInspire.org

Facebook:
[@MontgomeryPublicSchools](https://www.facebook.com/MontgomeryPublicSchools)

Twitter:
twitter.com/mpsal

MPS Instagram:
[instagram.com/mps_ala](https://www.instagram.com/mps_ala)

YouTube:
[youtube.com/MontgomeryPublicSchoolsAlabama](https://www.youtube.com/MontgomeryPublicSchoolsAlabama)

HOW WILL VIRTUAL LEARNING WORK?

- All MPS students will be in a virtual learning environment for the first nine weeks of the 2020-2021 school year. MPS will monitor COVID-19 to determine whether to extend virtual learning past the first nine weeks of school.
- Students will be required to log into their virtual learning platform each day.
- For the first week of school, students will end classes at noon and teachers will have professional development in the afternoon.
- Students will have an opportunity to check out a technology device from their assigned school. School administrators will notify parents of pickup times for devices. Starting out, we will provide devices based on need. Those students who already have Wi-Fi enabled devices may use them. We are working toward becoming a "one-to-one" district, meaning we will provide every student with a device.
- Students with IEPs, ILEPs, 504s, or other special needs will receive detailed information from their schools.
- All teachers will participate in professional development training sessions to prepare them to teach our students in virtual learning environments. Teachers will be able to reference the training throughout the school year.
- MPS will follow the standardized testing guidelines provided by federal and state departments of education.
- MPS encourages students and parents to establish an open line of communication as we navigate through virtual learning. Teachers will have set office hours, a timeframe for responding to emails, and resources to support children while learning. Students will have dedicated time for supplemental resources to ensure they're comfortable with learning standards. Training will be provided to parents to help their children in a virtual learning environment. Parents can find more information about this training at their child's school.
- Visit www.EngageEducateInspire.org for more information and to stay updated throughout the school year.

How Do I Enroll My Child at MPS?

Parents/legal guardians must provide the following to enroll:

- A valid Alabama Immunization Certificate.
- A valid birth certificate (original for kindergarten).
- A valid form of identification issued by the State of Alabama or a military ID.

Legal custody/guardianship paperwork issued from a court if the person enrolling is not the biological parent as indicated by the birth certificate.

Two documents that reflect a student's physical residence. (One must be a primary proof of residence).

Primary Proof of Residence:

- Utility bill (electric or gas) that must be current within 30 days.
- An apartment or home lease/mortgage.

A. Apartment/Home lease – Official document – only to be used if all utilities are included.

B. Current monthly mortgage statement (within 30 days)



All new MPS students will enroll online for the 2020-2021 school year. **All returning students are also required to register online at the "Current Student Registration" link**

found on the homepage of the district's website at www.mps.k12.al.us

Secondary Proofs:

Property tax records or deeds, income tax records, a copy of a check or correspondence from the IRS, a copy of a Social Security check or correspondence from the Social Security Office, correspondence from other U.S. government agencies (DHR, Food Stamp Office), or employment records.

Note: A government or state agency document can be used to verify legal residence if parent/guardian does not have utility and/or lease in their name (i.e. Social Security Administration or local government agency).

Bus Number/Bus Stop Location & Pick-Up Times - *When students return to schools for the second nine weeks

You can find your child's bus route, bus number and schedule by calling the MPS Transportation Line at (334) 223-6900. You can also request this information by email to transportationinfo@mps.k12.al.us.

Age at Enrollment

To enter kindergarten, a child must be 5 years old on or before September 2. To enter first grade, a child must be 6 years old on or before December 31.



If you need help enrolling your child online, contact your child's school. Many schools have scheduled days and times on campus to help familiarize parents with the online system. Remember, you **MUST** be the parent or legal guardian of a student to enroll them in school.

FAQs

Here are answers to the most frequently asked questions about the reopening of schools. Please check your school or the district website for updates.

Q. Will MPS provide technological devices for online learning? **Every MPS student will be issued an MPS laptop.**

Q. I do not have internet access. How will my student connect to the internet? **MPS will work with families to provide internet access. Information about Wi-Fi is available on www.EngageEducateInspire.org.**

Q. Will breakfast and lunch still be provided to students? **Yes, all MPS students will receive breakfast and lunch.**

Q. What platform is MPS using for virtual learning? **Per the Alabama State Department of Education, each school system will utilize Schoology as its learning management system.**

Q. Will students be able to participate in sports or any other extracurricular activities? **Yes, all MPS students will be able to participate in sports or extracurricular activities.**

Q. Will virtual lessons be taught by teachers at the school where my child is enrolled? **All MPS students will be taught by MPS teachers.**

Q. Do virtual students have to log in during school hours or can they wait until later after parents have returned from work? **All students will be required to log in daily.**

Q. What help is available for students with IEPs and 504s? **MPS families with IEPs and 504s will receive services based on the student's individual plan.**

Q. Will pre-K also be virtual? **Yes, all MPS students will start off the year learning virtually.**

Q. Will teachers and students be able to keep in touch with guidance counselors? **Yes, all MPS guidance counselors will have set office hours to accommodate students.**

Q. Will teachers/MPS staff have a set time to respond to emails? **All MPS employees have a 48-hour window to respond to emails.**

Q. For students who plan to return to school after the first nine weeks, how will that transition work? **A form will be sent home with students before the end of the first nine weeks for families to fill out if they choose face-to-face learning for the second nine weeks.**

Q. How will attendance work for dual enrollment students? **Schools will work with these students on the best way to handle their situations.**

Q. Will before and after child care be available? **No. Schools will not be open to students.**

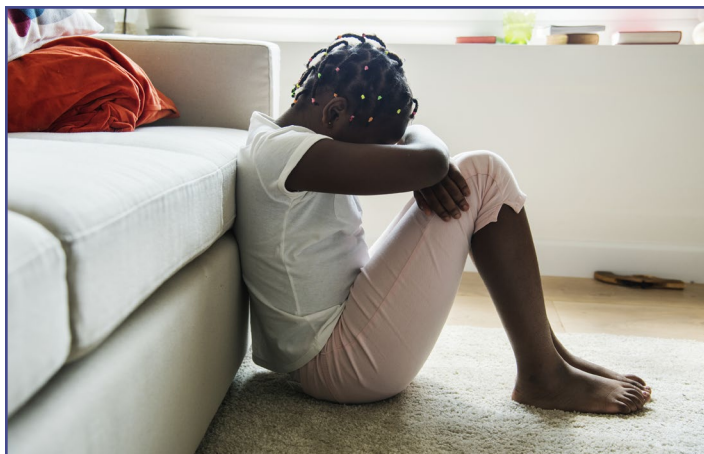
Q. How will students be graded? **MPS will use Grading, Promotion and Retention (GPR) as outlined in the manual.**



MPS Student Social Services to Continue Services to Students Virtually

MPS social services staff members will continue to provide social and behavioral services to students utilizing phone, text, email, and/or video conference.

The Behavioral Intervention and Support Team will provide virtual counseling and behavioral support services to students who are currently on their caseload. New referrals will be accepted from school personnel for students who are in need of counseling or behavioral support. Parent coaching and family support are also being offered in addition to professional development for teachers.



The School Social Work Team will continue to provide family education/support, case management, crisis intervention, and referrals to school/community resources to meet the needs of students and their families. Social work referrals are typically made by principals, guidance counselors, nurses, and other school or district personnel; however, students and families may also access social work services by self-referral.

Below is a list of resource materials for maintaining emotional, mental, physical well-being for their families during the pandemic and beyond.

COPING WITH STRESS DURING COVID-19

Talking with Children: Tips for Caregivers, Parents, and Teachers during Infectious Disease Outbreaks

<https://store.samhsa.gov/product/Talking-With-Children-Tips-for-Caregivers-Parents-and-Teachers-During-Infectious-Disease-Outbreaks/PEP20-01-01-006>

Parent/Caregiver Guide to Helping Families Cope with the Coronavirus Disease 2019

www.nctsn.org/resources/parent-caregiver-guide-to-helping-families-cope-with-the-coronavirus-disease-2019

MENTAL HEALTH

Children's Mental Health Disorders

www.cdc.gov/childrensmentalhealth/symptoms.html

Helping Your Child Heal from Trauma

English: www.childwelfare.gov/pubPDFs/trauma_ts_2020.pdf

Ayudando a su hijo a curarse del trauma

Spanish: www.childwelfare.gov/pubPDFs/trauma_sp_2020.pdf

Teens and Suicide: What Parents Should Know

<https://afsp.org/teens-and-suicide-what-parents-should-know>

If your child is experiencing suicidal thoughts, please visit your local emergency room. You may contact the resources below for 24/7 crisis counseling.

Crisis Text Line (24/7 Crisis Support)

Text 741741 www.crisistextline.org

If you need assistance with accessing mental health services, please feel free to contact your child's guidance counselor. You may also reach the social worker assigned to your child's school, by contacting Student Social Services at 223-6851.



National Suicide Prevention Hotline (24/7 Crisis Support)

Toll-Free: 1-800-273-TALK (1-800-273-8255)

Toll-Free (Español): 1-888-628-9454

TTY: 1-800-799-4TTY (1-800-799-4889)

Website available in English & Spanish:

English: <https://suicidepreventionlifeline.org/>

Spanish: <https://suicidepreventionlifeline.org/help-yourself/en-espanol/>

Child Nutrition Program to Offer Free Grab-and-Go Meals

The Child Nutrition Program will be providing free grab-and-go meals for students on Monday and Wednesday of each week from 7 a.m. to 1 p.m. beginning on August 10.

These meals will be available for pickup at every school site except Goodwyn Middle School, Jeff Davis High School and Wares Ferry Elementary School.

The meals will consist of breakfast and lunch for each day of the week. On Mondays, each student will receive four meals, and on Wednesdays, they will receive six.

The child does not have to be present for the meals to be distributed, but parents and guardians must provide the child's name and/or lunch number. According to the National School Lunch Program, participants in the meal program must be enrolled in the district.

Contact the Child Nutrition Department at (334) 223-6925 for more information on the meals program.



Community Food Pantries Provide Support for Families Impacted by COVID-19

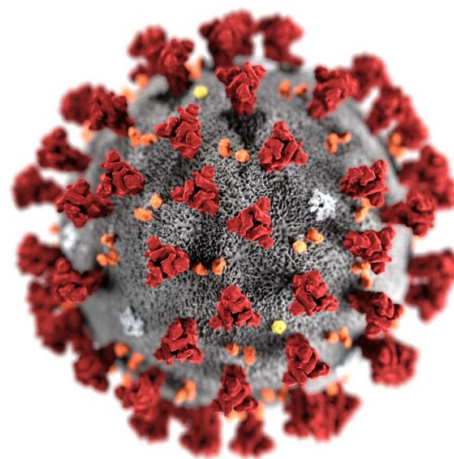


The Montgomery Area Food Bank website offers families who need food assistance a listing of food pantries located throughout Montgomery County.

Food insecurity is rising in every part of the United States and will continue to do so throughout 2020 due to COVID-19, according to projections from Feeding America. Alabama is listed among the four states that had the highest rates of food insecurity before the pandemic. Fortunately, there is a network of food pantries in our community that are ready to help families impacted by the corona virus who need food assistance.

The Montgomery Area Food Bank offers a comprehensive list of all area food pantries on their website at montgomeryareafoodbank.org under the Assistance link. Users can enter their address or zip code using the online tool to find food pantries that are located closest to them. Each pantry has different service days and hours. Making an appointment is highly recommended. For more information, call Montgomery Area Food Bank at (334) 263-3784 or visit them online.

Montgomery Public Schools in collaboration with state and local health officials are actively taking steps to protect students, teachers, administrators, and staff at schools and school-sponsored events, and slow community spread of COVID-19. The following precautions will be used, but may be adjusted over the 2020-2021 school year.



District COVID-19 Safety Measures

** Guidelines when students return to campuses*

1. Face coverings for students will be required. Bandanas will not be allowed. Initially, students will be provided with masks but there is a limited supply at each school.

2. Parents will be required to provide masks for their child when the supply of masks is depleted.

3. School personnel will wear a face shield and/or mask while teaching and transitioning throughout the school building.

4. Hand sanitizer and/or soap will be available in restrooms and in classrooms.

5. Hand sanitizer stations will be placed at multiple locations throughout the school building. Frequently touched areas such as doorknobs will be routinely cleaned throughout the school day.

6. School supplies will not be shared among students.

7. Social distancing guidelines will be followed to the extent possible.

8. Students will be required to wash their hands and/or use hand sanitizer throughout the school day.

9. Student temperatures will be taken daily upon entering

the building but home will be the initial point of screening each day.

10. Parents must determine if their child presents any signs of infection prior to sending them to school.

11. If a child rides a school bus to school and exhibits symptoms, he/she will be seated in an isolated area on the bus until arrival at school.

12. The nurse or other designated staff will take the student's temperature and determine if the parents need to pick the student up from school.

13. Sitting on the floor as is traditionally done in the early elementary grades is prohibited.

14. At the secondary level, students who participate in PE will not be required to dress-out as they have in the past and social distancing guidelines will be enforced.

15. Elementary students who go to PE will not be allowed on slides or other structures.

16. Visitors must wear masks to enter the school building and will not be allowed to visit classrooms or have lunch with their child.



Safety Starts at Home

General guidelines about preventing coronavirus from the Centers for Disease Control



Keep your distance

Stay at least six feet from other people. The virus is believed to spread mainly person-to-person, between people who are in close contact. It is spread through respiratory droplets produced by coughing, sneezing or talking. There is evidence that people who are not showing symptoms can spread the disease.



Wash your hands

Wash them with soap and water for at least 20 seconds after you have been in a public place or after sneezing, coughing or blowing your nose. If soap and water are not available, use hand sanitizer that is at least 60 percent alcohol. Avoid touching your eyes, nose and mouth.



Cover your mouth and nose

Wear a mask or other cloth face cover when going out in public. This is meant to protect others in case you are infected.



Cover coughs and sneezes

Use a tissue or the crook of your elbow. Throw used tissues in the garbage. Wash your hands as soon afterward as possible.



Clean and disinfect

The CDC recommends frequent cleaning and disinfecting of surfaces such as doorknobs, tables, light switches, countertops, handles, desks, phones, keyboards, toilets, faucets and sinks.



Monitor your health

Symptoms include fever, cough and shortness of breath. Take your temperature if symptoms develop. If you believe you have COVID-19, stay home and contact your doctor.

Source: www.CDC.gov/coronavirus

BACK TO SCHOOL PARENT CHECKLIST

**When students return to campuses*

Things to Know:

- The name and contact information of your school's principal and any other administrators.
- Your child's teacher and the best way to keep in touch with them.
- * Bus numbers, bus drivers, and locations of bus stops

Things to Do:

- * If your child walks to school, walk the route with them to and from school to make sure it is safe.
- Complete all student forms and return them to the school.
- Make sure you have access to the INOW parent portal.
- Make sure your contact information is current so you don't miss important messages.

How to Stay Involved:

- Attend virtual open houses and parent meetings.
- Check the school and district website on a regular basis.
- Join the PTA.
- Become a class parent.
- * Be a chaperone for field trips and dances when they resume.
- Help your child learn at home. Ask about what they learned, what their day was like and help them with their homework.



MPS Expands Learning Options for 2020-2021 School Year

Virtual vs Face-to-Face

As we continue to confront the challenges of COVID-19, MPS is offering the option for students to learn at home or to return to school buildings, where vigorous safety protocols will be established. **All students will attend school virtually for the first nine weeks.** Parents will have the option of choosing either virtual or face-to-face learning as the school year progresses, based on guidance provided by state and local health authorities and district leadership. School leadership teams will discuss individual students' needs and make case-by-case decisions for students with IEP/504/IELP plans. Please contact your school if you have any questions that are not addressed below.

VIRTUAL LEARNING

Devices

At the beginning of the school year, MPS will distribute devices to students based on need. The goal is for MPS to be a one-to-one district, meaning every student enrolled will receive a device. Devices will be distributed from school-level personnel. Device pick-up dates will be announced. Any computer equipment supplied by the school is on loan during enrollment and must be returned upon withdrawal, graduation, or at the request of the school.

Internet Access

We are working to provide families with internet access, including through Wi-Fi Cradlepoint hotspots placed in various locations in Montgomery.

Learning Environment

Certified teachers from Montgomery Public Schools will provide daily instruction via

our virtual learning platforms. Teachers will interact with students during live and pre-recorded sessions. Students and parents will be able to contact teachers during posted office hours as needed.

Attendance

Attendance for virtual students will be taken daily. Virtual students must "attend" class daily in accordance with the Montgomery Public Schools calendar. Students fulfill attendance requirements when they log in to their classes daily during the designated window.

MPS students are required to abide by district and state attendance policies and procedures. Teachers will not be required to provide live instruction after the regular school day ends.

Student expectations

Students will access their daily lessons through a virtual platform called Schoology. Students will complete assignments and send

them electronically through the virtual platforms. Students are required to complete virtual learning assignments daily. This could include online classes with teachers and classmates, as well as offline projects and required readings. Students will be expected to use (as available) the provided online textbooks and other learning materials. There will not be any weekly delivery of paper packets.

Assignments & Grading

Virtual students can take quizzes and tests at home. Assignments will be submitted through the virtual learning platform and each teacher will provide instructions on how to submit assignments for grading. Virtual students will be graded on submission of assignments and on course mastery content.

Athletics & Extracurricular Activities

Virtual students may participate in extracurricular activities and clubs at their zoned schools. Students

must meet membership criteria as set by the zoned school in order to qualify for participation in the club or activity. Virtual students may also participate in athletic programs at their zoned schools. Some onsite training and/or practices may be required in order to participate. Students may also participate in band. Some onsite rehearsals may be required.

Parent Responsibilities

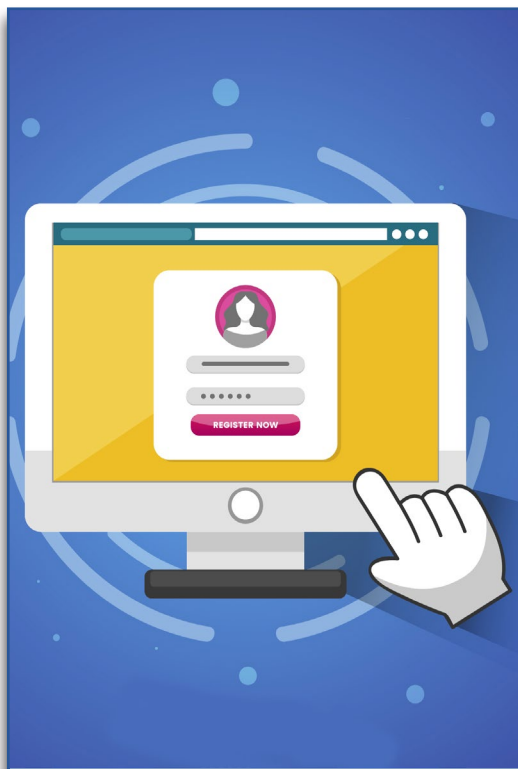
If a student falls behind in the virtual setting, school leadership teams will evaluate the student's capacity to be successful in the virtual learning environment and make recommendations to parents as needed. Parents may opt to keep their child in the virtual environment if they begin to struggle, but parents will be responsible for this decision. Students will be required to go to either their zoned school or a designated site within MPS to take state mandated assessments or any other necessary assessments. Dates and times of any assessments will be communicated in advance so that parents have time to make necessary arrangements for their child to come to an MPS site. Grab- and- go breakfasts and lunches will be provided for all virtual students and must be picked up from the school each week on Monday, by a parent or guardian, at the designated time.

FACE-TO-FACE LEARNING

***Second Nine Weeks**

Safety Precautions

Please refer to the district's COVID-19 safety measures on page 8.



ONLINE ENROLLMENT

All students will be enrolled online for the 2020-2021 school year.

All returning students are now required to register online at the "Current Student Registration" link listed below.

NEW STUDENT REGISTRATION:

<https://registration.mps.k12.al.us/login>

CURRENT STUDENT REGISTRATION:

<https://update.mps.k12.al.us/login>

These links are available on the district website at www.EngageEducateInspire.org

Devices

At the beginning of the school year, MPS will distribute devices to students based on need. The goal is for MPS to be a one-to-one district, meaning every student enrolled will receive a device. Devices will be distributed from school-level personnel. Device pick-up dates will be announced. Any computer equipment supplied by the school is on loan during enrollment and must be returned upon withdrawal, graduation, or at the request of the school.

Attendance

Students will attend school Monday through Friday at their school's designated hours.

Student expectations

Students will adhere to their class schedules daily. Students will be using some traditional methods as well as using the computer to complete assignments. This will prepare students in the event that schools have

to close again due to the pandemic. Each student will be loaned a device and must take it home as prescribed by his/ her teacher to do online assignments. Students will be provided a grab- and-go lunch daily. Students will either eat in the lunchroom, classrooms or outdoor spaces while adhering to social distancing guidelines. The size of each individual school's lunchroom will determine lunchroom procedures.

NEED HELP?

If you have questions about virtual learning or want tips on how to support your child's learning from home, talk to your child's teacher or visit <https://www.teachthought.com/technology/remote-learning-tips-for-parents/> or <http://toolkit.capta.org/programs/family-engagement/how-to-support-student-learning-at-home/>

Montgomery Public Schools has teamed up with the city of Montgomery and organizations including the Alabama-Korea Economic and Education Partnership (A-KEEP), the Montgomery Museum of Fine Arts, Auburn University Montgomery and others to provide educational programming on the Capital City Connection, the city's television station.

The educational programming includes lessons on art, music, Spanish, Korean language and culture, math, language arts, and readings of popular children's books. These shows feature educators from MPS, A-KEEP and other community partners. This programming is being aired throughout the day on the Capital City Connection, which can be found on channel 181 on Charter Spectrum, channel 96 on WOW! and on the city of Montgomery's website at <https://www.montgomeryal.gov/live/capital-city-connection>. You can also find most of these videos on the MPS YouTube channel, <https://www.youtube.com/MontgomeryPublicSchoolsAlabama>.



MGM Catch the K-Wave

A-KEEP educators were the first to be involved in the video project with MPS and the city of Montgomery and quickly began producing a number of videos on Korean language in the Montgomery City Hall auditorium. They have produced videos on Korean language, drumming and dance that helps students learn about Korean culture and invites students to join in the fun.



Language Arts with Dr. B

These engaging and insightful language arts lessons are produced by Brooke A. Burks, Ph.D., Department Chair & Associate Professor of Curriculum, Instruction, & Technology at the Auburn University Montgomery's College of Education. Dr. Burks provides lessons on comma usage; colons and semicolons; close reading of a text; and inferences and conclusions.

Virtual learning may be new to many parents and students. Here are some tips to help manage online learning.

Screen time during coronavirus crisis

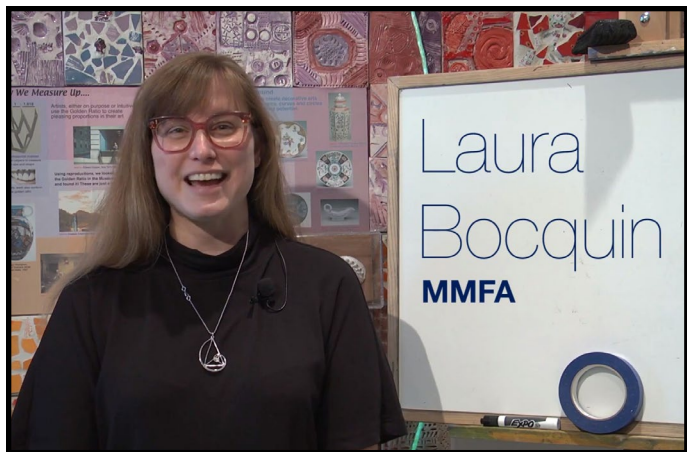
<https://childmind.org/article/screen-time-during-the-coronavirus-crisis/>

Learning at home during coronavirus: 8 tips for fostering children's self-regulation and promoting creativity

<https://www.apa.org/topics/covid-19/children-self-regulation>

Five tips for increasing motivation and academic engagement at home

<https://drive.google.com/file/d/16OOT9vTGs9Ag-1pQLXLWzeuaEzMPH5TUh/view?usp=sharing>



Montgomery Museum of Fine Arts Videos

MPS has partnered with the Montgomery Museum of Fine Arts (MMFA) for a series of videos that connect art with subjects including math and history. These interdisciplinary lessons by Laura Bocquin and Kaci Norman also include instruction on creating art projects such as self-portraits, printmaking and artworks based on the Golden Spiral. The museum can even provide the materials necessary to complete the projects!



Music with Mr. Robinson

This video series by Chisholm Elementary music teacher Jeremy Robinson keeps students engaged by showing them simple ways of making music at home. Activities include creating a rain stick and making songs with glasses filled with different amounts of water.



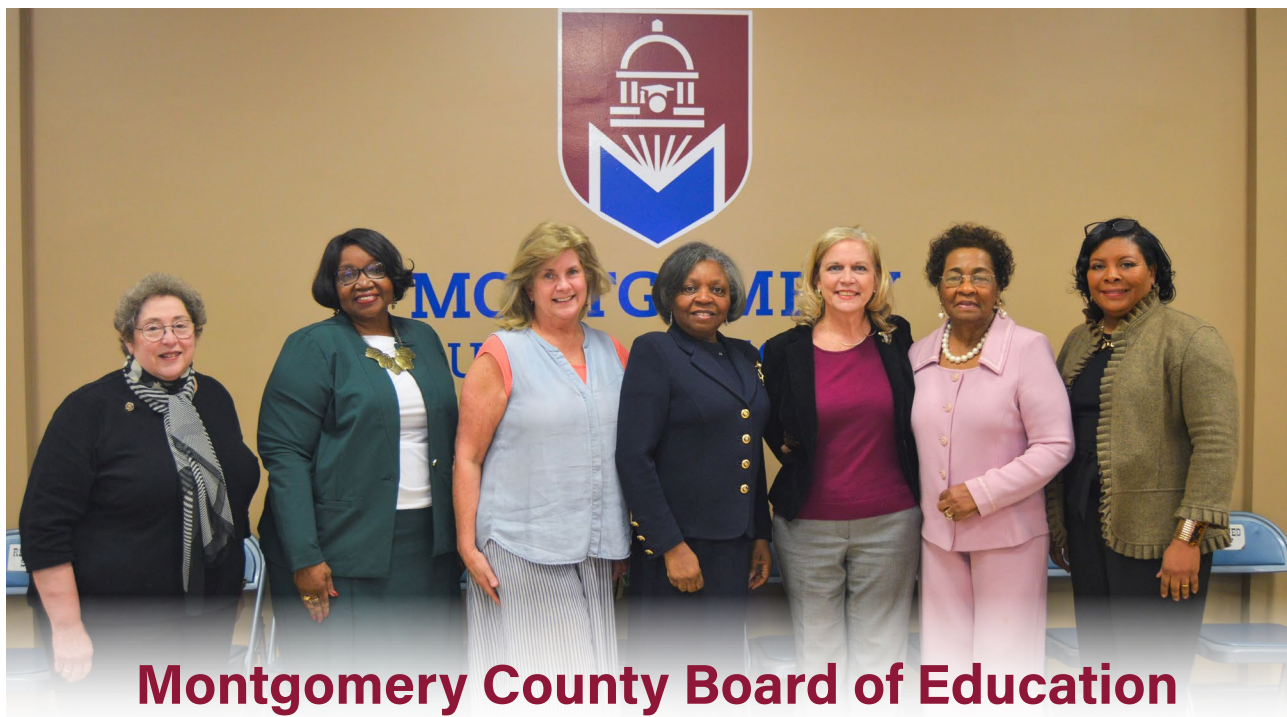
Math with Mrs. Norris

Fourth-grade teacher Lindsey Norris of Forest Avenue Academic Magnet produces fast-paced videos filled with plenty of humor that are sure to capture the attention of young viewers. Norris makes learning math concepts fun. Her videos are also available on her YouTube channel, which you can find by searching for Lindsey Norris on YouTube.



Oh, KayKay

In this funny and inventive video series, Baldwin Arts and Academics Magnet theater teacher Sarah Kay Grinstead plays KayKay, an imaginative first-grader who learns about writing, art, and more with the help of her puppet friends Littleby and PB. These videos are 15 minutes each and are packed with humor, playfulness and learning.



Montgomery County Board of Education

Clare Weil - District 2 (Board President)

(334) 223-6700 | Term ends: 11/30/2022

Email: Clarecweil@gmail.com

Clare.weil@mps.k12.al.us

Schools: Dozier Elementary, Flowers Elementary, Goodwyn Middle, Lee High & Vaughn Road Elementary

Claudia Mitchell - District 6 (Vice President)

(334) 223-6700 | Term ends: 11/30/2022

Email: claudmitch2@gmail.com

Claudia.mitchell@mps.k12.al.us

Schools: Floyd Middle Magnet, Jeff Davis High, Crump Elementary, Carver Elementary, Carver High, Davis Elementary, Johnson Elementary, MacMillan International Academy at McKee Middle, Floyd Elementary & Bear Exploration Center Magnet

Dr. Lesa Keith - District 1

(334) 546-0693 | Term ends: 11/30/2022

Email: Lesa.keith@mps.k12.al.us

Schools: Dalraida Elementary, Garrett Elementary, Morningview Elementary, Capitol Heights Middle & The Children's Center

Dr. Brenda Coleman - District 3

334-223-6700 | Term ends: 11/30/2022

Email: bdc0006@icloud.com

Brenda.coleman@mps.k12.al.us

Schools: Baldwin Middle Arts & Academics

Magnet, Booker T. Washington Magnet High, Wares Ferry Elementary, Chisholm Elementary, Forest Avenue Academics Magnet, Highland Gardens Elementary & Highland Avenue Elementary

Mary Briers - District 4

(334) 281-7316 | Term ends: 11/30/2020

Email: Mary.briers@mps.k12.al.us

Schools: Southlawn Middle, Bellingrath Middle, Dunbar/Ramer, Lanier High, Catoma Elementary, Pintlala Elementary, Martin Luther King Elementary, Southlawn Elementary, E.D. Nixon Elementary, Morris Elementary, PACE, Arboretum & Fews School

Jannah Bailey - District 5

(334) 313-3105 | Term ends: 11/30/2022

Email: bailey@childprotect.org

Jannah.bailey@mps.k12.al.us

Schools: Blount Elementary, Carr Middle, Halcyon Elementary, Park Crossing High & Wilson Elementary

Arica Smith - District 7

(334) 223-6700 | Term ends: 11/30/2020

Email: Arica.smith@mps.k12.al.us

Schools: Brewbaker Middle, Brewbaker Technology Magnet High, Fitzpatrick Elementary, Brewbaker Primary, Brewbaker Intermediate, Dannelly Elementary, LAMP & Montgomery Preparatory Academy Career Technology (MPACT)



Montgomery County Board of Education members had a busy summer! One of the highlights included joining Montgomery Mayor Steven Reed, city and county officials, Superintendent Moore, Booker T. Washington Magnet High School Principal Quesha Starks, school staff and former principals of BTW, at a ceremony to break ground on the school's new home, located at 4400 Bell Road. The event, held on July 23, drew current and former students, parents and supporters from the arts community. The new school is scheduled to be completed in 2022.

MONTGOMERY COUNTY BOARD OF EDUCATION

OUR CORE VALUES

- Commitment to Achievement
 - Passion for Learning
 - Integrity & Accountability
- Respect for Self and Others
 - Educational Equity
 - Community Partnerships

MISSION:

We will engage, educate and inspire our students to succeed in college, career and beyond.

VISION:

MPS is a place where every student develops a love of learning, cultivates intellectual curiosity, and dreams of a future full of amazing possibilities.

Class of 2020 Earns Nearly \$68 million in Scholarship Offers

Graduates of Montgomery Public Schools had another great year in terms of scholarship offers, totaling nearly \$68 million. LAMP Magnet High students earned the highest amount in scholarship offers with more than \$17 million. Lee High School came in second place with about \$14.2 million — an increase of \$2.4 million over last year's total.

Park Crossing High and Jeff Davis High seniors earned an impressive \$8.9 and \$8.5 million in offers, respectively. Booker T. Washington Magnet seniors earned \$6.5 million in offers. Lanier High School seniors earned \$6.2 million in scholarship offers — an increase from its total from about \$2.5 million

last year. Carver High and BrewTech seniors rounded out the list with \$3.6 and \$2.5 million, respectively.

SCHOLARSHIP TOTALS BY HIGH SCHOOL

Loveless Magnet High: \$17,063,240

Robert E. Lee High: \$14,161,100

Park Crossing High School: \$8,873,459

Jefferson Davis High: \$8,567,875

Booker T. Washington Magnet High: \$6,553,451

Sidney Lanier High: \$6,235,110

George Washington Carver High: \$3,654,250

Brewbaker Technology Magnet High: \$2,502,546

Total: \$67,611,031

Meet Our New Principals

Todd Davis- MPACT and MPS Career Technical Education

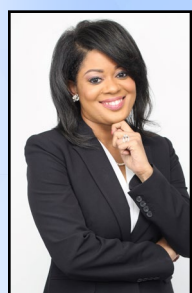
Longtime educator and program administrator Todd Davis has been named MPS' Director of Career Technical Education, Workforce Development and Montgomery Preparatory Academy Career Technologies (MPACT). A native of Lauderdale County, his 14-year teaching career includes positions as a social science, health and physical education teacher; a coach; an athletics director; and a bus driver in schools in Shelby and Chilton counties and the Alabaster City School System.



In 2014, he served as assistant director of LeCroy Career Technical Center and Safe School Coordinator in Chilton County, followed by stints as principal of Verbena High School in Chilton County in 2016 and as principal of Lexington High School in Lauderdale County in 2018. In addition, Davis has served on a variety of postsecondary committees at The University of Montevallo, served on in-state AdvancedED Accreditation External Review Teams, and presented to numerous school districts about the importance of 21st century global awareness and career technical education.

Davis is a graduate of Athens State University and holds a master's and educational specialist degree from The University of Montevallo.

Jaclyn Brown Wright - Brewbaker Primary



Jaclyn Brown Wright was recently named principal of Brewbaker Primary School. Wright has worked in the field of education for 18 years and has held teaching and leadership positions at every level, from Pre-K to post-secondary. Prior to being named principal of Brewbaker Primary, Wright served as an executive director for K-12 curriculum, instruction and special programs for three years for Conecuh County Schools.

In addition, she provided leadership for Cone-

cuh County Schools' Special Education, Career Tech, STEAM, Magnet, Curriculum & Instruction, Guidance and Counseling, Social Workers, School Nurses, Educational Technology Initiatives and Dual Enrollment. She also served as academic continuity coordinator and led the strategic planning for the district's response to the COVID-19 pandemic.

Wright earned a bachelor's degree in elementary education from Alabama State University; a master's in elementary education; a master's in education administration, and a doctor of education (ABD) from Grand Canyon University.

Courtney Giles- Floyd Middle Magnet

Courtney Giles has been devoted to the educational arena for more than 19 years. She attended both undergraduate and graduate school at Alabama State University and has been a proud member of Sigma Gamma Rho Sorority, Inc. for 21 years. She has experience working with students ranging from kindergarten through eighth grade. She has impacted teaching and learning as a goal-achieving classroom teacher, an ARI reading specialist, an ESL facilitator, a literacy coach, and an assistant principal.



She served as the principal of Highland Avenue Elementary School for six years (2014-2020). Under her leadership, the school achieved a 23-point gain on the A-F Report Card in just two years.

She is a veteran, having served in the Alabama Army National Guard for eight years. She is a graduate of the Montgomery Chamber of Commerce Leadership Torchbearer Class III (2011) and was featured in the Montgomery RSVP Magazine's "The List" (Sept 2011). She has written several articles featured in the *Montgomery Advertiser* as well as on WSFA's Visions in 2014. She also is a former adjunct instructor for the ASU School of Psychology (2015-2018).

She is also a consultant with ASU Regional In-Service Center, having presented at MEGA Conference 2019 in Mobile and the 2019 Gulf Coast Writing Conference in San Destin, Fla. Ms. Giles is thrilled

to bring her skills and experiences to Floyd Middle Magnet.



Heather Grayson- Highland Avenue Elementary

Former assistant principal and academic interventionist Heather Grayson has been tapped to lead Highland Avenue Elementary School as its new principal.

Grayson began her career as a kindergarten and second-grade teacher at Brewbaker Primary, where she impacted the lives of students for nine years. She also served as an academic interventionist and assistant principal at the school.

The focus this year at Highland Avenue centers on fostering positive relationships with all stakeholders and creating a safe learning environment that promotes academic achievement. This year's theme is "Learning is Our G.A.M.E. - Growth, Achievement, Motivation, Excellence."

Grayson believes it is important for everyone who steps through the school doors to feel welcomed and excited to be there. This attitude enables everyone to meet the challenges of academic excellence in a positive, fun and nurturing environment, she said.

A native of Montgomery, she graduated from Montgomery Public Schools and went on to earn a bachelor's degree in Early Child and Elementary Education and a master's in instructional leadership.

Ty Harrell- Blount Elementary

Blount Elementary School Principal Ty Harrell is both excited and honored to lead this great school community.

Harrell's love for children inspired her to become an educator. She has taught several grades at the elementary level and was a middle school literacy coach. Prior to being named principal of Blount, she passionately served as assistant principal at T.S Morris Elementary School for four years.

Harrell said her mission this year is to lead and support her staff and positively impact every student's school experience.



"Where there is unity, there is strength. It is my belief that the administrative team, teachers, support personnel, and parents all play an active part in helping our students meet and exceed desired expectations," she said.

Jamarious Harris- Brewbaker Middle



Brewbaker Middle School Principal Jamarious Harris is no stranger to school leadership. He is currently in his fifth year as an educational leader. Prior to becoming principal, he held positions as lead teacher, secondary dean, and assistant principal.

Harris holds a bachelor's degree in music education from Troy University and a master's in educational administration and supervision from the University of Southern Mississippi. He is also currently pursuing a doctorate in educational leadership in curriculum and instruction at Columbus State University.

Keisha Howard- Bellingrath Middle

Bellingrath Middle School students and staff will start the school year with a new leader — veteran educator Keisha Howard. Howard said she plans to work collaboratively with teachers, staff and parents to prepare Bellingrath students for college, career and life. "Together, I am confident that we will continue to provide our students a challenging and enriching experience in a safe and nurturing environment," she said.



Howard began her career as a teacher in Bullock County Schools before transitioning to MPS in 2008 as a middle school teacher. She has held positions as curriculum instructional assistant, accountability interventionist, and assistant principal.

She holds a bachelor's in biology, a master's in biology education and a master's in instructional leadership from Alabama State University.

continued on page 18



Patrick Mullins- Jefferson Davis High School

Principal Patrick Mullins' educational background and personal experiences have helped shape his vision for leading Jeff Davis High School. "The educational experience that students receive at Jeff Davis High School will allow students to become whatever they want to become in life. My job is to help students reach their ultimate goal in life, and I'm committed to doing just that," he said.

Mullins is a distinguished educator with over 16 years of experience. He has held positions as an elementary teacher, spent four years as an assistant principal at Forest Avenue Academic Magnet, and two years as assistant principal at Bob Jones High School in Madison County. Prior to coming to Jeff Davis, he was principal at Hazlewood Elementary in Lawrence County.

Mullins graduated from Columbus State University with an educational specialist degree in educational leadership and was inducted into the Phi Kappa Phi Honor Society. An avid baseball fan, he enjoys umpiring high school games and was recently recognized by the Alabama High School Athletic Association as the 2019 Northeast District Official of the Year.

Gena Robinson- Garrett Elementary

Humility, love and encouragement aptly describe Garret Elementary Principal Gena Woods Robinson's leadership style. She's carefully developed it over her 17-year career as a classroom teacher, reading specialist and administrator with MPS.



She began her career in 2003 as a second-grade teacher at Brewbaker Primary School, followed by positions as reading specialist at MacMillan International Baccalaureate Academy in 2008 and assistant principal at Highland Avenue Elementary in 2014. In 2017, she was tapped to serve as a member of the district's Literacy Leadership Team and to attend the Literacy Leaders' Institute in San Diego.

The following year, she was chosen to serve as the Site Coordinator at Dannelly Elementary School for the Alabama Summer Achievement Program (ASAP) and was a presenter for the ASAP Summer Literacy

Institute in Montgomery and the Mega Conference in Mobile during the summer of 2019.

In 2020, Robinson developed an intervention plan for Highland Avenue Elementary that was awarded a \$3,000 grant by the Mary L. and Eugene C. Vann Reading Fund.

The Montgomery native holds a bachelor's degree in elementary education from Alabama State University and two master's degrees in educational leadership and instructional leadership from Auburn University Montgomery.

Donna Ross- Carver Elementary



Whether she is stimulating the creative mind of a learner or encouraging a teacher to step out of his or her comfort zone, Carver Elementary and Arts Magnet School's new principal Dr. Donna Martin Ross truly leads by example.

Though born and reared in Detroit, she completed her secondary education in Selma. She has more than 20 years of service to the field of education and has worked in a variety of capacities from National Board Certified Teacher, curriculum writer, ARI Reading Specialist, and curriculum specialist to assistant principal of John Herbert Phillips International Baccalaureate Academy.

Ross earned an undergraduate degree from Auburn University and a master's and educational specialist degree from the University of Montevallo. She also recently completed her Ph.D. at the University of Alabama.

She said she is excited to unite her experience, openness to learn, and child-centered approach to support Carver Elementary students.

"Our scholars realize their potential when dynamic teachers access the knowledge, strengths, and unlimited capacity presented to them," she said. "I know that we are in uncertain times and a lot remains undetermined. However, I know that success occurs when opportunity meets preparation. I believe that this is an opportunity for us to improve the trajectory of CEMS and prepare our scholars for success," she said.

SCHOOL —HIGHLIGHTS—

MPS students, teachers and schools made several noteworthy accomplishments, in during the 2019-2020 school year, which brought local, state and national distinction to the school district and Montgomery community. Here are a few of those accomplishments.



Pictured left, Carver High School teacher Alyxandra Price was selected as a Fulbright Scholar in 2019. She received a Fulbright Distinguished Awards in Teaching Short Term Program (Fulbright DAST) grant. She was one of 13 U.S. citizens who traveled abroad as part of Cycle II of the Fulbright DAST program in 2019.

Pictured right, in 2020, Bear Exploration Center was named a Magnet School of Distinction by Magnet Schools of America for the third consecutive year and fourth year overall.



A 2020 grant from Hyundai Motor Manufacturing Alabama made it possible to provide robotics kits and to create a robotics team at every MPS middle school. Auburn University is providing training for teachers at the schools. Here, Hyundai, Auburn University and MPS leaders pose with a check for \$70,000 provided to the district through the Auburn University Foundation.



In 2019, Brewbaker Technology Magnet High was the first school in the River Region to earn Science, Technology, Engineering and Mathematics (STEM) certification from Cognia under its updated standards. An official STEM review team spent two days interviewing BrewTech teachers, students, and stakeholders to evaluate the implementation and effectiveness of BrewTech's STEM mission and vision. Pictured are members of the BrewTech STEM certification team with a congratulatory message from Cognia.)



Pictured at left, MPS has an ongoing partnership with Alabama Shakespeare Festival. MPS students have appeared in the ASF plays "Four Little Girls" and "Ruby: The Story of Ruby Bridges." The plays were part of ASF's season offerings, and students also performed them for members of Congress in Washington, D.C. When "Ruby" premiered at ASF in 2020, the subject of the play, Ruby Bridges Hall, was among those in attendance. Here, Ruby Bridges Hall, second from left, joins BTW Magnet High teachers, from left, Chintia Kirana, Zestlan Simmons and Emily Thomas.



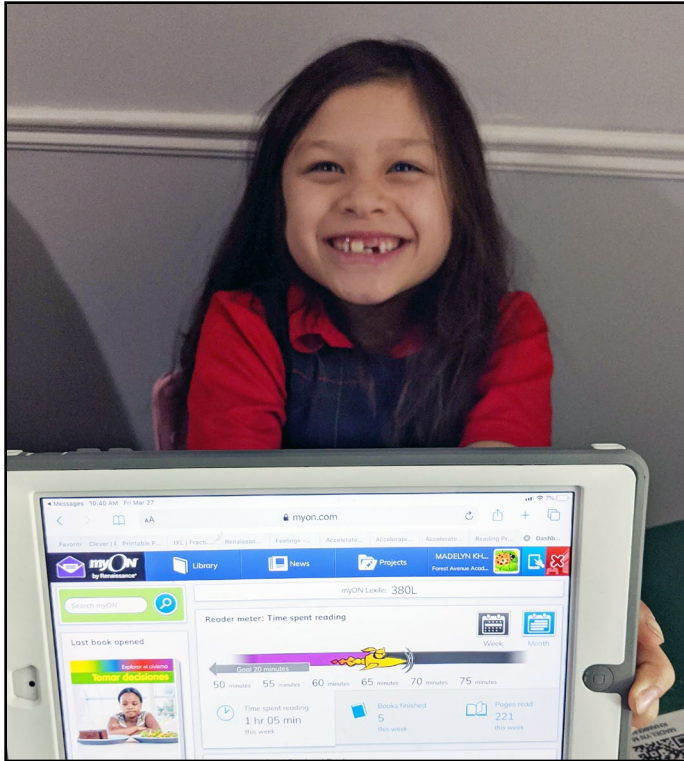
Wilson Elementary was named a 2020 Council for Leaders in Alabama Schools (CLAS) School of Distinction for its STEM Makerspaces program. Wilson was one of only 30 schools statewide and the only elementary school in the River Region to receive this recognition.



Brewbaker Primary received a \$10,000 Be Healthy School grant from Blue Cross Blue Shield of Alabama for the 2019-2020 school year. The awards are given to select schools around the state for the implementation of health and wellness programs that emphasize increased exercise, nutrition, education and parental involvement during the year. MacMillan International Academy and Capitol Heights Middle have also be awarded grants recently.



Pictured at left, Chanice Spicer of BrewTech was named the 2019-2020 Gatorade Alabama Girls Track and Field Athlete of the Year. This distinction makes her a finalist for the national award. She has a long string of victories at state meets and holds the state record in the 100 and 200 meters. Not only is she a stellar athlete on the field, but she also excels academically, and maintains a 4.21 GPA. Here, she holds medals she won in 2019 at the Wide World of Sports Complex in Orlando, Fla.



Madelyn, a student at Forest Avenue Academic Magnet, uses the myON app available to all MPS students to find books to read and to track her reading progress.

myON App Helps Students Track Reading

Students at MPS have thousands of books at their fingertips with the help of myON, an online resource available to all students through the online student portal.

The myON Reader is a personalized digital library with a collection of 6,454 books. Students can access the books 24/7 even without Wi-Fi. The app allows students to download up to 20 books at a time. Books are matched to students' interests, grade and reading level.

Students and parents can keep track of reading progress through the Student Profile Report, which acts as a snapshot of the students' reading activity. This feature is designed to be a conversation starter between parents and students. It includes the number of books read, the type of books read and the growth the student has achieved. The app features audio text, text highlighting and an embedded dictionary so families can read together even if there is not a proficient adult reader in the household.

This resource also includes myON News, which gives students access to five articles daily centered on current events. The articles are vetted by child psychologists to ensure that content is age appropriate.



The Jefferson Davis High marching band made a big splash on national television with an appearance on "America's Got Talent" on NBC. The band wowed the judges with a stunning performance and earned a trip to the next round in the competition.
Photo Credit: Kristina Kirk



LAMP High student Sun Mee Choi was a 2020 National Merit Scholarship winner. She was one of LAMP's six National Merit Finalists and 12 National Merit Semifinalists.

Directory of MPS Schools & Central Office Departments



[@MontgomeryPublicSchools](https://www.facebook.com/MontgomeryPublicSchools)



[@MPSAL](https://twitter.com/MPSAL)



Montgomery Public
Schools Alabama

Schools

Baldwin Arts & Academics Magnet (6-8)	(334) 269-3870	410 S. McDonough St. 36104-4226
Bear Exploration Center (K-5)	(334) 284-8014	2525 Churchill Dr. 36111-2899
Bellingrath Middle School (6-8)	(334) 269-3623	3350 S. Court Street, 36105-1606
Blount Elementary (K-5)	(334) 244-0078	1650 Ray Thorington Rd, 36117-8487
Booker T. Washington Magnet (9-12)	(334) 269-3618	3315 Hayneville Road, 36108
Brewbaker Primary (K-2)	(334) 284-8005	4445 Brewbaker Dr. 36116-4299
Brewbaker Intermediate (3-5)	(334) 284-8006	4455 Brewbaker Dr. 36116-4299
Brewbaker Middle (6-8)	(334) 284-8008	4425 Brewbaker Dr. 36116-4299
Brewbaker Tech Magnet High (9-12)	(334) 284-7100	4405 Brewbaker Dr. 36116-4299
Capitol Heights Middle (6-8)	(334) 260-1000	116 Federal Drive, 36107-1798
Carr Middle (6-8)	(334) 244-4005	1610 Ray Thorington Rd, 36117-8487
Carver Elementary (K-5)	(334) 269-3625	3100 Mobile Drive, 36108-4058
Carver High (9-12)	(334) 269-3636	2001 W. Fairview Ave. 36108-4199
Catoma Elementary (K-5)	(334) 288-5799	1780 Mitchell Young Rd. 36108-4058
Chisholm Elementary (K-5)	(334) 269-3643	307 E. Vandiver Blvd. 36110-1800
Crump Elementary (K-5)	(334) 284-8020	3510 Woodley Road, 36116-3899
Dalraida Elementary (K-5)	(334) 260-1007	440 Dalraida Road, 36109-2898
Dannelly Elementary (K-5)	(334) 269-3657	3425 Carter Hill Road, 36111-1897
Davis Elementary (K-5)	(334) 269-3662	3605 Rosa L. Parks Ave. 36105-2099
Dozier Elementary (K-5)	(334) 260-1012	200 Eastern By-pass, 36117-2092
Dunbar-Ramer School (K-8)	(334) 562-3250	56 Naftel Ramer Rd. Ramer, AL 36069
Fitzpatrick Elementary (K-5)	(334) 284-8044	4055 Fitzpatrick Blvd. 36116-4820
Flowers Elementary (K-5)	(334) 260-1015	3510 Harrison Road, 36109-5134
Floyd Middle (6-8)	(334) 284-7130	215 Hall Street 36104-3844
Forest Avenue Magnet (K-5)	(334) 269-3673	1700 W. Fifth Street, 36106-1587
Garrett Elementary (K-5)	(334) 260-1090	555 McLemore Drive, 36117-7633
Goodwyn Middle (6-8)	(334) 260-1021	209 Perry Hill Road, 36109-3799
Halcyon Elementary (K-5)	(334) 271-9000	1501 Parkview Drive, 36117-7744
Highland Avenue Elementary (K-5)	(334) 269-3690	2024 Highland Avenue, 36107-2698
Highland Gardens Elementary (K-5)	(334) 269-3685	2801 Willena Avenue, 36107-1096
Jefferson Davis High (9-12)	(334) 269-3712	3420 Carter Hill Road, 36111-1896
Johnson Elementary (K-5)	(334) 284-8016	4550 Narrow Lane Road, 36116-2998
King Elementary (K-5)	(334) 284-8080	4655 Gateway Drive, 36108-4923

Lanier High (9-12)	(334) 269-3726	1756 S. Court Street, 36104-5498
Lee High (9-12)	(334) 269-3742	225 Ann Street, 36107-2599
Loveless Academic Magnet Program (9-12)	(334) 284-7500	3440 McGehee Rd., 36116-3511
MacMillan at McKee (K-5)	(334) 284-7137	4015 McInnis Road, 36116-5509
McKee Middle (6-8)	(334) 284-7528	4017 McInnis Road, 36116-5509
Morningview Elementary (K-5)	(334) 260-1028	2849 Pelzer Avenue, 36109-2099
Morris Elementary (K-5)	(334) 223-6920	801 Hill Street, 36108-2713
Nixon Elementary (K-5)	(334) 269-3012	1000 Edgar D. Nixon Blvd, 36104-4836
Park Crossing High (9-12)	(334) 260-8121	8000 Park Crossing, 36117-8487
Pintlala Elementary (K-5)	(334) 288-9523	215 Federal Dr. Hope Hull, AL 36043-5102
Southlawn Elementary (K-5)	(334) 284-8028	5225 Patricia Lane, 36108-5399
Southlawn Middle (6-8)	(334) 284-8086	5333 Mobile Highway, 36108-5367
Vaughn Road Elementary (K-5)	(334) 260-1031	4407 Vaughn Road, 36106-3099
Wares Ferry Road Elementary (K-5)	(334) 260-1036	6425 Wares Ferry Road, 36117-3399
Wilson Elementary (K-5)	(334) 272-8819	8900 New Park Drive, 36117-5367

Learning Academies/Special Education Centers

Children's Center	(334) 262-4850	310 N. Madison Terr. 36107-1599
MPS Arboretum Nature Center	(334) 269-4815	1755 Hunter Loop Road, 36108
MPS Pre-K Center	(334) 223-6801	4015 McInnis Road, 36116-5509
Montgomery Preparatory Academy for Career Technologies (MPACT) (10-12)	(334) 613-9177	2901 E. South Blvd., 36116-1023
McInnis School	(334) 288-2280	Rt. 4, 247 McInnis Rd., 36116-9498
McIntyre Comprehensive Academy	(334) 223-7885	1200 Hugh Street, 36108

Central Office Departments- (Frequently Called Numbers)

District Operator	(334) 223-6700	307 S. Decatur Street, 36104
Behavior Intervention Center	(334) 223-6851	321 Early Street, 36104
Communication Office	(334) 223-6761	307 S. Decatur Street, 36104
District Resource Officers (Truancy)	(334) 269-3774	321 Early Street, 36104
English as a Second Language	(334) 223-6864	8900 New Park Drive, 36117
Human Resources-Certified	(334) 223-6730	307 S. Decatur Street, 36104
Human Resources- Classified	(334) 223-6740	307 S. Decatur Street, 36104
Instructional Support-Elementary	(334) 223-6840	307 S. Decatur Street, 36104
Instructional Support- Secondary	(334) 223-6756	307 S. Decatur Street, 36104
McKinney-Vento Homeless Program	(334) 223-6901	321 Early Street, 36104
MPS Security	(334) 223-6750	1718 Britton Lance, 36106
Special Education Department	(334) 269-3808	1153 S. Lawrence Street,
Student Support Services	(334) 223-6850	321 Early Street, 36104
Student Social Services	(334) 223-6851	321 Early Street, 36104
Superintendent's Office	(334) 223-6710	307 S. Decatur Street, 36104
Transportation Department	(334) 284-2085	5000 Troy Highway, 36116



Virtual learning puts a lot of responsibility on parents that goes farther than schoolwork.

Now that students will be spending more time at home online, internet safety is an important lesson parents must teach at home. The internet isn't always the safest place for children, but you can protect your child as they learn online at home by following these helpful tips.

- Familiarize yourself with the school district's Internet Usage Policy.
- Establish clear guidelines, teach children to spot red flags, and encourage children to have open communication with you.
- Supervise young children's use of the internet, including periodically checking their profiles and posts. Keep electronic devices in open, common areas of the home and consider setting time limits for their use.
- Review games, apps and social media sites before they are used by your child. Pay particular attention to apps and sites that feature direct messaging, video chats, and offer user anonymity, which are frequently relied upon by online predators.
- Adjust privacy settings and use parental controls for online games, apps, and social media sites.
- Tell children to avoid sharing personal information, photos, and videos online.
- Teach children about body safety and boundaries, including the importance of saying 'no' to inappropriate requests both in the physical world and the virtual world.
- Be alert to potential signs of abuse and attempts to conceal online activity.
- Encourage children to tell a parent, guardian, or other trusted adult if anyone asks them to engage in sexual activity or other inappropriate behavior.
- Immediately report suspected online enticement or sexual exploitation of a child by calling 911, contacting the FBI or filing a report with the National Center for Missing & Exploited Children at 1-800-843-5678.

Source: U.S. Department of Justice
www.justice.gov/coronavirus/keeping-children-safe-online



MONTGOMERY
PUBLIC SCHOOLS